



**ST. JOHN XXIII**  
PARISH

# ANNUAL FINANCIAL REPORT

FISCAL YEAR 2025: July 1, 2024 - June 30, 2025



**11**

Weddings

**18**

Quinceañeras

**42**

Funerals

## BY THE NUMBERS

**1,285**

Weekend  
Mass  
Attendees

**2**

Churches

**129**

First Communions

**145**

Confirmations

**97**

Baptisms

**140**

Pope John XXIII  
School  
Students

**382**

Religious  
Education  
Students

**3,598**

Registered  
Households

**1**

Parish

# LETTER FROM FR. JEAN-PHILIPPE

**“To every thing there is a season, and a time to every purpose under heaven.”  
- Ecclesiastes 3:1**

Dear Brothers and Sisters in Christ,

We have much to celebrate as we complete our third year as one unified parish in Christ. We continue to nurture our culture of stewardship, which we often present as a stool with three legs – time, talent, and treasure. We take pride in the significant progress we have made in the last two years to reduce our operating deficit. At the same time, we recognize this is the season for us to strengthen the “treasure” leg of our stewardship stool. We are getting ready to launch a fall stewardship campaign as part of our Parish Pastoral Plan during which we will encourage all parishioners to reflect on their gifts of time, talent, and treasure to our parish. First, though, I invite you to read this report and learn more about our parish and school finances during the last year.



**DEFICIT REDUCTION.** On page four of this report you can see that we reduced parish expenses by approximately \$100,000 in the last year which contributed to reducing our overall deficit by \$81,000. Our budget for the 2026 fiscal year, which began on July 1, 2025, anticipates a further reduction. Our goal is to achieve a balanced budget by the end of June 2027.

**EXPENSES & REVENUE.** I am proud of the excellent work that was done to reduce overall expenses and increase fundraising revenue during this past year. We note that our Sunday and Holy Day collections, although lower than in the previous year, were still on target with our budget projections. Looking ahead, we recognize that growing our Sunday collections will be a key to our financial strength.

**THE “TREASURE” LEG.** The election of Pope Leo XIV will likely bring attention to the principles of stewardship and transparency within the Vatican. We are inspired by this as we undertake the Culture of Stewardship priority as laid out in our Parish Pastoral Plan. This priority reminds us that we must focus on strengthening our “treasure” leg so we can fully realize our other parish priorities: Fostering Parish Unity, Catechetical Advisory Board, Faith Formation for Adults, Youth Engagement, Discipleship and Evangelization, and Liturgical Life. With strong financial resources, we can accomplish all that we set out to do. Thank you for your generosity!

**POPE JOHN XXIII SCHOOL.** Our parish school continues to provide a rigorous and faith-based education under the leadership of our principal, Dr. Mary Maloney. Parish support of the school continues to help them move forward. The spirit of faith, resilience, and learning is strong at the home of the Panthers!

United with you in Christ,

Rev. Jean-Philippe Lokpo, MCCJ  
Pastor



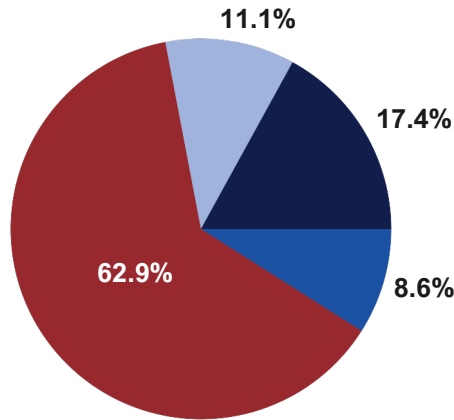
“Whatever you did for one of these least brothers of mine, you did for me’ (Matthew 25:40). The maturity of a Church is measured not by its financial capacity but by its willingness to give and its generosity motivated by a love for Christ.”

- FR. JOSÉ MANUEL, ASSOCIATE PASTOR

# REVENUE AND EXPENSE BREAKDOWN

## REVENUE

- Sunday Collections
- Fundraising
- Rental Income
- Other

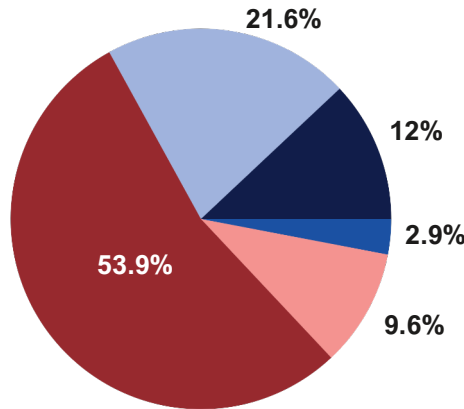


“Good financial stewardship allows us to maintain and operate our parish buildings and grounds, fund salaries and healthcare for our staff, and support the wealth of parish ministries through which we celebrate and share our faith and our commitment to the work of God. We are *all* called to be good stewards of our parish.”

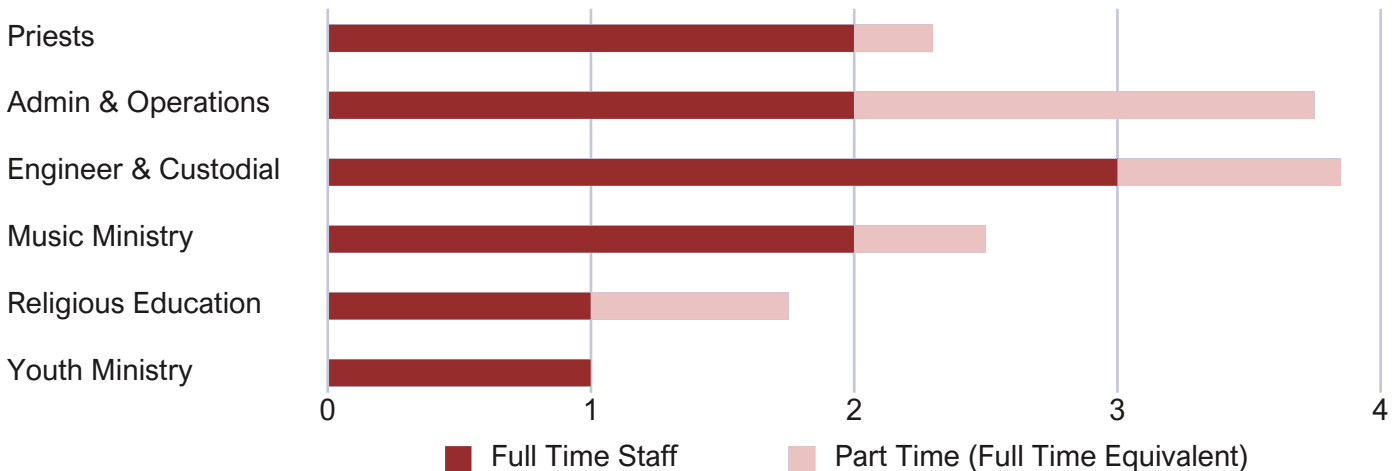
- Brian Bigelow (Chair of Parish Finance Council)

## EXPENSES

- Personnel
- Facilities
- Ministries & Administration
- PJ23 School Subsidy
- Archdiocesan Support



## PARISH STAFF: FULL TIME AND PART TIME



# FINANCIAL REPORT

St. John XXIII Parish's Fiscal Year (FY) is from July 1 to June 30

|   | FY24<br>(Actual) | FY25<br>(Actual) | FY26<br>(Budget) |
|---|------------------|------------------|------------------|
| <b>Revenue</b>  |                  |                  |                  |
| Sunday Collections (incl. Christmas, Easter)            | 1,192,679        | 1,171,739        | 1,232,567        |
| Fundraising (less expenses)                             | 190,248          | 207,077          | 199,750          |
| Rental Income   | 328,335          | 323,165          | 340,902          |
| Other (e.g., Religious Ed., sacraments, and other fees) | 168,235          | 160,534          | 259,475          |
| <b>Total Revenue</b>                                    | <b>1,879,497</b> | <b>1,862,515</b> | <b>2,032,694</b> |
| <b>Expenses</b>   |                  |                  |                  |
| Personnel (salaries, benefits, taxes)                   | 1,171,897        | 1,105,730        | 1,260,187        |
| Facilities (e.g., utilities, maintenance, insurance)    | 419,444          | 441,868          | 523,137          |
| Ministries & Administration                             | 263,596          | 245,721          | 188,000          |
| Pope John XXIII School Subsidy                          | 86,538           | 60,000           | 60,000           |
| Archdiocesan Support                                    | 206,964          | 196,815          | 173,295          |
| <b>Total Expenses</b>                                   | <b>2,148,439</b> | <b>2,050,135</b> | <b>2,204,619</b> |
| <b>NET OPERATING DEFICIT</b>                            | <b>(268,942)</b> | <b>(187,620)</b> | <b>(171,925)</b> |
| <b>Non-Operating Income</b>                             |                  |                  |                  |
| Auxiliary Groups' Income (less expenses)                | 49,134           | (16,122)         | 0                |
| Bequests & Memorials                                    | 212,350          | 54,150           | 0                |
| Investment Gains  | 140,978          | 107,708          | 81,710           |
| <b>Total Non-Operating Income</b>                       | <b>402,463</b>   | <b>145,736</b>   | <b>81,710</b>    |
| <b>TOTAL</b>  | <b>133,520</b>   | <b>(41,884)</b>  | <b>(90,215)</b>  |

## NOTES

**SUNDAY COLLECTIONS:** The Sunday and Holy Day collections, while less than the prior year, were as budgeted. The FY26 budget anticipates a 4% increase.

**FUNDRAISING:** Fundraising proceeds from October Fiesta, St. Nick's Fest, Winter Parish Party, and the Rummage Sale came in higher than budgeted for FY25.

**RENTAL INCOME:** The former St. Mary School building is rented to the McGaw YMCA for its child care program. A new 10-year lease is in place for FY26 and reflects a 5% increase.

**PERSONNEL:** The 2026 budget includes a 4% salary increase, a rehire of a part time maintenance position, and the addition of a part time minister of care.

**FACILITIES:** FY25 actuals reflect costs of boiler, plumbing, and other required building maintenance. FY26 includes projected increases to utility costs.

**MINISTRIES & ADMINISTRATION:** FY26 shows a continued reduction in these costs due to consolidation of legacy parish databases and implementation of the PushPay giving system.

**ARCHDIOCESAN SUPPORT:** These are payments to the Archdiocese for securing employee benefits, property and casualty insurance, and ministerial support. Support also includes contributions to the Archdiocesan priests pension fund.

**AUXILIARY GROUPS:** Peace & Justice, SPRED, Evanston Black Catholics, Mission Trip, and Circulo de Oracion raise and spend money for their ministries.

# SPECIAL COLLECTIONS

## Originated by St. John XXIII Parish

|   |               |
|---|---------------|
| St. Vincent de Paul Society                           | 39,826        |
| Pope John XXIII School Annual & Scholarship Funds     | 11,603        |
| Solidarity Bridge                                     | 5,847         |
| Sharing Parish: Our Lady of Lourdes (Togo)            | 3,742         |
| Interfaith Action of Evanston                         | 3,258         |
| United Power for Action and Justice                   | 3,206         |
| Archdiocesan Sharing Parish: St. Thomas of Canterbury | 1,698         |
| <b>Subtotal</b>                                       | <b>69,180</b> |

## Originated by the Archdiocese of Chicago

|   |                |
|---|----------------|
| 2025 Annual Catholic Appeal (pledged)       | 69,515         |
| Catholic Campaign for Human Development     | 11,251         |
| Missionary Co-Op / World Mission Sunday     | 7,995          |
| Catholic Charities                          | 5,532          |
| Archdiocesan Priests' Health and Retirement | 5,335          |
| Seminarian Education Fund                   | 3,442          |
| Religious Retirement Fund                   | 3,399          |
| The Church in Latin America                 | 2,402          |
| The Church in Eastern and Central Europe    | 2,165          |
| Holy Land                                   | 1,200          |
| Propagation of the Faith                    | 784            |
| Peter's Pence                               | 450            |
| CRS Operation Rice Bowl                     | 146            |
| <b>Subtotal</b>                             | <b>113,616</b> |
| <b>TOTAL</b>                                | <b>182,796</b> |



# SAVINGS AND INVESTMENTS

|  | FY24             | FY25             |
|--|------------------|------------------|
| <b>Unrestricted Funds</b>                            |                  |                  |
| Cash and Savings*                                    | 941,364          | 841,135          |
| Endowment - Accumulated Earnings (available for use) | 618,335          | 717,352          |
| <b>Total Unrestricted Funds</b>                      | <b>1,559,699</b> | <b>1,558,487</b> |
| <b>Restricted Funds</b>                              |                  |                  |
| Restricted Parish Auxiliary Account                  | 78,661           | 61,189           |
| Remaining Capital Campaign Funds                     | 645,043          | 604,239          |
| Building Fund  | 11,776           | 11,852           |
| Endowment Principal                                  | 802,324          | 802,324          |
| <b>Total Restricted Funds</b>                        | <b>1,537,805</b> | <b>1,479,604</b> |
| <b>TOTAL CASH AND INVESTMENTS</b>                    | <b>3,097,504</b> | <b>3,038,091</b> |

\* Unrestricted cash and savings are sufficient to cover five months of operating expenses.

# POPE JOHN XXIII SCHOOL

Pope John XXIII School is proud to share highlights from its FY25 School Year Report. **This was the second year under the vibrant leadership of Dr. Mary Maloney.** The school maintained full staffing of its dedicated teachers in FY25 and is projected to do the same for FY26. In FY25 the school achieved its projected enrollment of 140 students, with continued growth and strong interest generated through regular tours and online inquiries. This has resulted in increased enrollment for kindergarten and preschool for the new school year. Marketing has expanded through updated branding, including a new website, new logo, new signage (aided by the generous support of a parishioner), and a partnership with the Archdiocese Marketing and Enrollment Network (AMEN).

**Academic innovation continued** with the launch of a World Language Lab and development of a STEAM (Science, Technology, Engineering, Arts, and Math) Lab, while elective offerings in middle school expanded significantly. Students excelled in science fairs, spelling bees, and academic competitions. Athletics and Fine Arts remain vibrant pillars of the school. The school counselor supports student well-being through advisory periods, individualized services, and social-emotional programs. **Faith formation is deeply woven into our community life** through weekly Mass, student ministry roles, classroom visits from Fr. Jean-Phillipe, and service projects.

There is a **strong engaged parent community**, committed to the school and its success. The school is honored to be recognized as **one of the Best Schools in America** by Niche, earning an **A+ rating for 2025.**

“There’s a real buzz in our school right now — our academics are strong, our community is engaged, and recent results from the Five Essentials survey conducted by the Archdiocese show we’re on the right track. We’re ready to keep this momentum going and make this our best year yet.”

- Jackie Sulton, Vice Principal

## WE ARE PJ23

### WHAT PARENTS ARE SAYING

- “Close knit & welcoming everyone is, no matter your faith or family structure.”
- “The preschool...is truly a gem (especially for working parents).”
- “The parents form strong friendships with one another.”
- “Rigorous education with religious guidance and character formation.”
- “Diverse, loving community”

### WHAT THE COMMUNITY LOVES

- Small class sizes
- Instruction in Spanish, French, and Latin
- In-house piano lessons and drama club
- Affordable before and after care
- Parent Book Club



# SAVINGS AND INVESTMENTS (SCHOOL)

|  | FY24             | FY25             |
|--|------------------|------------------|
| Cash and Savings                                     | 348,132          | 323,992          |
| Endowment - Accumulated Earnings (available for use) | 1,682,422        | 1,069,561        |
| <b>TOTAL CASH AND INVESTMENTS</b>                    | <b>2,030,554</b> | <b>1,393,553</b> |

## NOTE

**CASH AND SAVINGS:** The school has a strong cash position and has benefited from strong investment gains on its endowment. These funds were used to cover current operating deficits, providing a cushion as the school focuses on increasing enrollment.

# FINANCIAL STATEMENT (SCHOOL)

| Revenue  | FY24<br>(Actual) | FY25<br>(Actual) |
|--|------------------|------------------|
| Tuition & Fees                                 | 1,277,791        | 1,121,279        |
| Fundraising                                    | 319,159          | 268,518          |
| <b>Total Revenue</b>                           | <b>1,596,949</b> | <b>1,389,797</b> |
| <b>Expenses</b>                                |                  |                  |
| Personnel (salaries, benefits, taxes)          | 1,643,134        | 1,763,597        |
| Facilities (utilities, maintenance, insurance) | 158,406          | 183,501          |
| Books, Supplies, and Administration            | 144,357          | 185,928          |
| <b>Total Expenses</b>                          | <b>1,945,896</b> | <b>2,133,026</b> |
| <b>NET OPERATING DEFICIT</b>                   | <b>(348,947)</b> | <b>(743,229)</b> |
| <b>Investment Gains</b>                        | <b>208,313</b>   | <b>111,306</b>   |
| <b>TOTAL</b>                                   | <b>(140,634)</b> | <b>(631,923)</b> |

## NOTES

**REVENUE:** Revenue is down as the school continues to build its enrollments post COVID. Parish support remains steady at \$60,000, in addition to parish collections for scholarship funds. There is a five year plan to increase enrollment.

**EXPENSES:** Increases in personnel expenses, benefits and health insurance costs are determined by the Archdiocese of Chicago. Maintenance costs include replacement of an old boiler. Utilities increases were greater than projected.



# CAPITAL CAMPAIGN UPDATE

Capital campaign funds are used for larger projects identified in the campaign materials. These typically include work on the buildings and grounds of the parish. The most recent campaign was the To Teach Who Christ Is (TTWCI) campaign. This capital campaign ended for St. Nick's in 2022 and for St. Mary's in 2024. Since the campaigns began while St. Mary and St. Nicholas were separate parishes, the funds raised will be used only for items identified by each legacy parish.

The capital raised for St. Nick's has largely been spent. During the life of the campaign, \$808,000 was raised. Of that, \$20,000 remains available.

For St. Mary's the campaign ended more recently. During the life of the campaign, \$1,376,000 was raised, and of that, \$584,000 is remaining. The available funds in the St. Mary's account are already allocated to the renovation of the two towers in the front of the church and for continued renovation of windows in the school building leased to the YMCA.

A new capital campaign initiated by the Archdiocese is on the horizon for late 2026. This is the Generation to Generation campaign. More information will be provided on this new campaign as it becomes available.



## PARISH FINANCE COUNCIL

**Brian Bigelow, Chair**

biggs96@yahoo.com  
773.203.4346

**Annie Kvasnicka**

annie.kvasnicka@gmail.com  
847.962.2112

**Suzanne Lefevre**

suzanne.m.lefevre@gmail.com  
847.644.9348

**Mary Erickson**

erickin49@aol.com  
847.269.1226

**Laura Pigozzi**

Impigozzi@gmail.com  
612.250.1582

**Len Grinstead**

grinsteadl@aol.com  
773.419.6584

**Karen Miller**

elelover3@gmail.com  
703.409.6178

**Mary Doucette**

doucette.mary@gmail.com  
847.256.2653

**Jay Larmee**

jlarmee@larmeeassociates.com  
847.347.2895

**Karen Przepyszny**

demuthprzep@gmail.com  
312.925.9332

This report was prepared by members of the Parish Finance Council with assistance from Art Roggow. A big thank you to Faith LaVoie and Raul Rico for the design and production of this report.